

Still life

Cartoon or graphic	A two-dimensional illustration.
Charcoal	A dark drawing material that crumbles easily.
Colour wheel	A circular chart that shows primary, secondary and tertiary colours.
Composition	Where things are placed within a piece of artwork.
Greyscale	A range of tones from light to dark.
Hue	Describes the colour within a spectrum.
Negative image	The reverse of an image (the positive image).
Sketching	A light, fast sketch which is often used for planning a piece of artwork.
Still life	A collection of objects which are arranged to then draw from.
Underpainting	Preparing the painting surface and to give something to paint on to.
Visual minutes	Visual minutes (also called 'graphic recording' or 'scribing' is a live, illustrated record of what is heard.

Key facts

Font means the size, shape and style of lettering.



In a negative image, the dark areas are light and the light areas are dark.



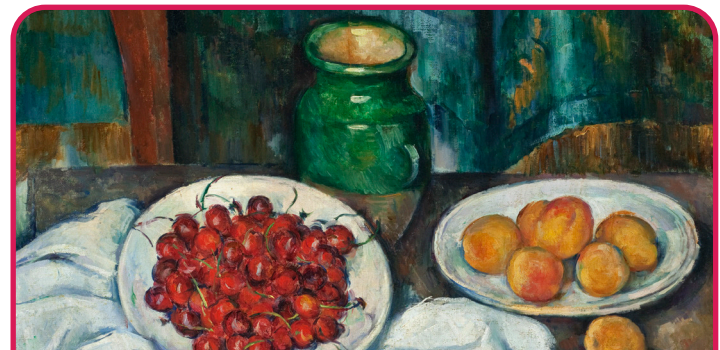
Artists' work looked at:



**Jaromir Funke**  
A leading photographer from Czechoslovakia during the 1920s and 1930s.  
Photo © Christie's Images / Bridgeman Images



**Ben Nicholson**  
An English painter who painted abstract compositions, landscape and still-life.  
Artwork © Angela Verren Taunt. All rights reserved, DACS 2020, Ben Nicholson, 1949 (still life), Photo © Christie's Images / Bridgeman Images



**Paul Cezanne**  
A French artist and Post-Impressionist painter.  
© Bridgeman Images

Iberê Camargo An expressionist painter from Brazil.